

Corporate Data / Stock Information

As of March 31, 2022

▶ **Company Name**

Yamato Holdings Co., Ltd.

▶ **Head Office**

16-10, Ginza 2-chome, Chuo-ku, Tokyo
104-8125 Japan
Telephone: 81-3-3541-4141

▶ **Established**

November 29, 1919

▶ **Registered**

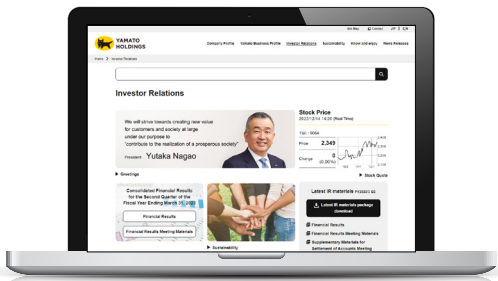
April 9, 1929

▶ **Paid-In Capital**

127,234,791,077 yen

▶ **Website**

<https://www.yamato-hd.co.jp/english/>



▶ **Fiscal Year**

From April 1 to March 31

▶ **Common Stock**

Authorized: 1,787,541,000 shares
Issued: 388,575,592 shares

▶ **Stock Exchange Listing**

Tokyo Stock Exchange

▶ **Transfer Agent and Registrar**

Mizuho Trust & Banking Co., Ltd.

▶ **General Meeting of Shareholders**

Held in June

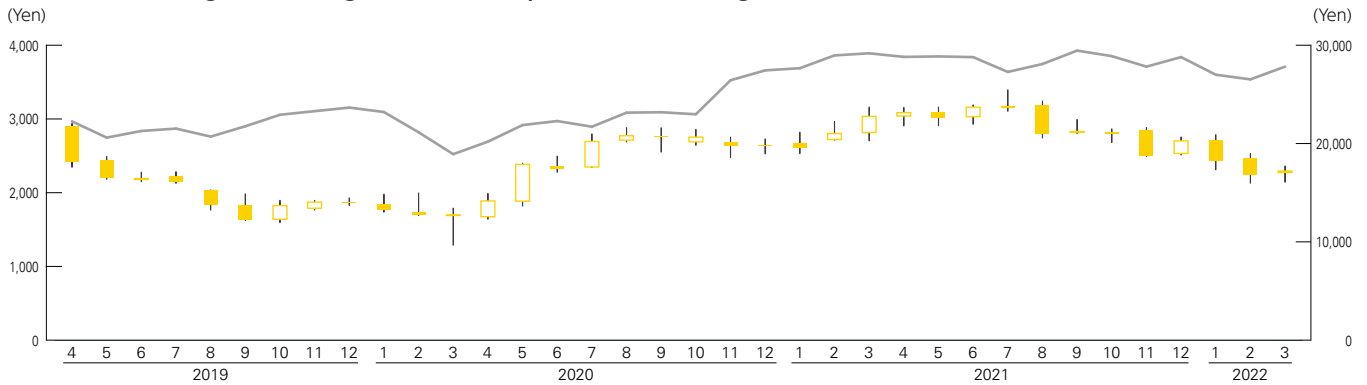
▶ **Auditor**

Deloitte Touche Tohmatsu LLC

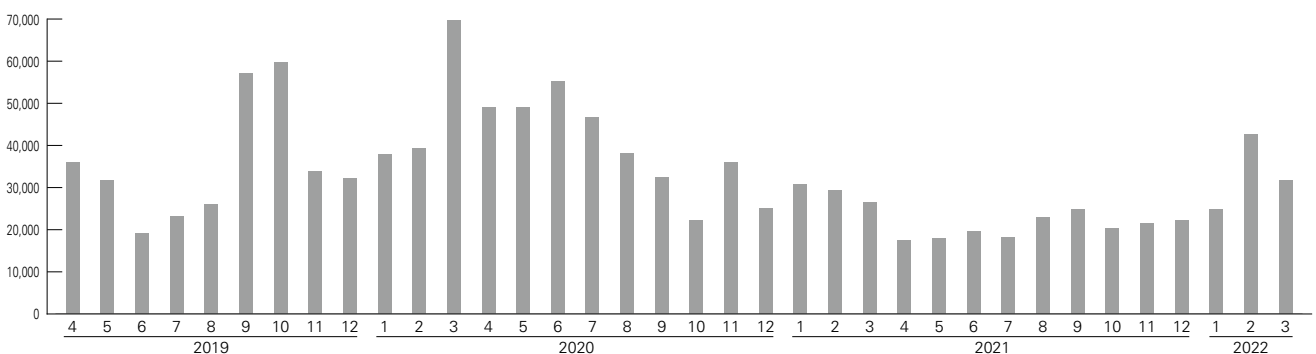
▶ **Principal Shareholders**

	Percentage of total shares outstanding (excluding treasury shares)
The Master Trust Bank of Japan, Ltd. (Trust Account)	17.67%
Yamato Employees' Shareholding Association	6.77%
Custody Bank of Japan, Ltd. (Trust Account)	6.34%
Meiji Yasuda Life Insurance Company	4.04%
Nippon Life Insurance Company	4.02%
Mizuho Bank, Ltd.	2.79%
Yamato Trading-Partner Shareholding Association	2.26%
Toyota Motor Corporation	1.57%
Sompo Japan Insurance Inc.	1.40%
Aioi Nissay Dowa Insurance Co., Ltd	1.31%
Total	48.17%

Stock Price Range / Trading Volume (Tokyo Stock Exchange)



(Thousands of shares)



■ Stock price range (left scale) — Nikkei stock average (right scale) ■ Trading volume (left scale)