

Corporate Data / Stock Information

As of March 31, 2023

▶ **Company Name**

Yamato Holdings Co., Ltd.

▶ **Head Office**

16-10, Ginza 2-chome, Chuo-ku, Tokyo
104-8125 Japan
Telephone: 81-3-3541-4141

▶ **Established**

November 29, 1919

▶ **Registered**

April 9, 1929

▶ **Paid-In Capital**

127,234,791,077 yen

▶ **Website**

<https://www.yamato-hd.co.jp/english/>



▶ **Fiscal Year**

From April 1 to March 31

▶ **Common Stock**

Authorized: 1,787,541,000 shares
Issued: 379,824,892 shares

▶ **Stock Exchange Listing**

Tokyo Stock Exchange

▶ **Transfer Agent and Registrar**

Mizuho Trust & Banking Co., Ltd.

▶ **General Meeting of Shareholders**

Held in June

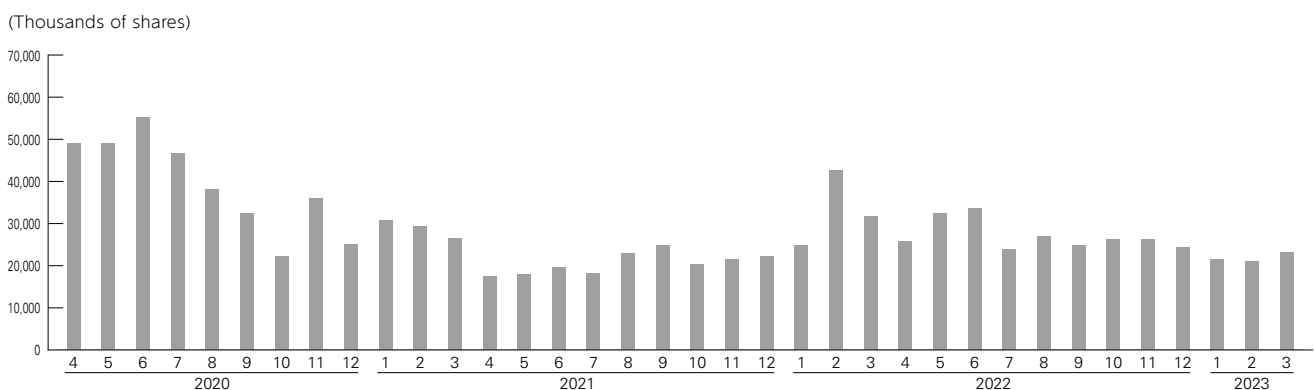
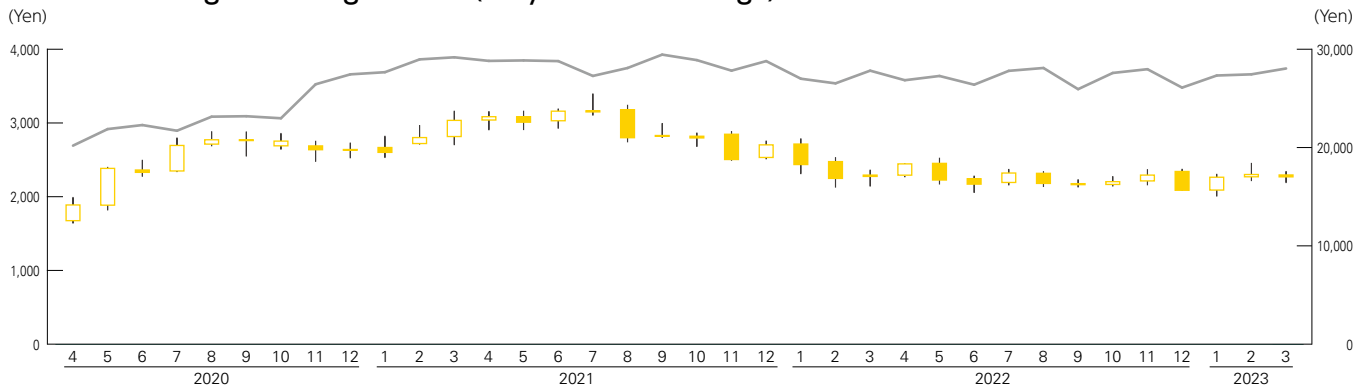
▶ **Auditor**

Deloitte Touche Tohmatsu LLC

▶ **Principal Shareholders**

	Percentage of total shares outstanding (excluding treasury shares)
The Master Trust Bank of Japan, Ltd. (Trust Account)	16.30%
Custody Bank of Japan, Ltd. (Trust Account)	7.69%
Yamato Employees' Shareholding Association	7.65%
Meiji Yasuda Life Insurance Company	4.08%
Nippon Life Insurance Company	4.07%
Mizuho Bank, Ltd.	2.82%
Yamato Trading-Partner Shareholding Association	2.33%
Toyota Motor Corporation	1.58%
STATE STREET BANK WEST CLIENT-TREATY 505234	1.45%
Sompo Japan Insurance Inc.	1.42%
Total	49.41%

Stock Price Range / Trading Volume (Tokyo Stock Exchange)



■ Stock price range (left scale) — Nikkei stock average (right scale) ■ Trading volume (left scale)